

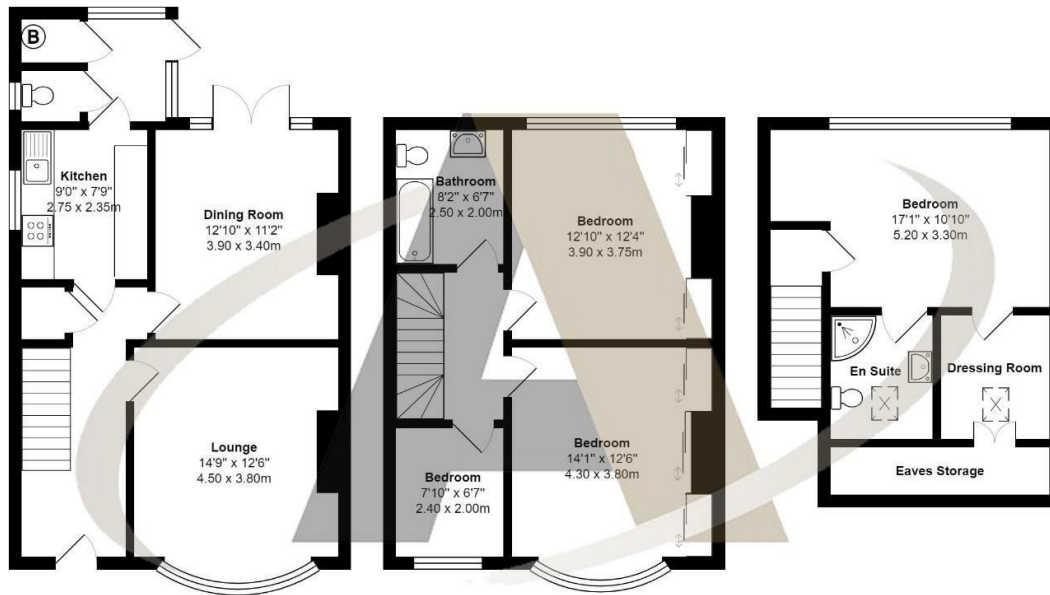
164 Uxbridge Road
Feltham TW13 5DY
£550,000

164 Uxbridge Road, Feltham, TW13 5DY

Occupying a sought after position in a popular residential road is this well presented and extended semi detached house. Laid out over three floors this family home offers four bedrooms upstairs and flexible reception rooms downstairs. When entering this property you are greeted with a welcoming reception hallway. There is a large reception room with bay window and feature fireplace to the front of the house and the dining room is to the rear with access onto the garden. The kitchen is also to the rear and has access to a utility room and WC. On the first floor there are three bedrooms and the family bathroom. Bedrooms two and three are both comfortable double rooms with built in wardrobes and bedroom four is a useable single bedroom and would also be a perfect nursery or home office / study. The family bathroom consists of a modern, white three piece bathroom suite with a shower over the bath. The master suite is on the second floor and consists of a large, bright double bedroom, en-suite shower room and dressing room. Outside there is a large rear garden and off road parking for several cars. This property is already attracting a lot of attention and internal viewings are encouraged. Viewings can be booked by calling Aspen Residential Estate Agents.



Floor Plan



Uxbridge Road, Feltham

Total Area: 1448 ft² ... 134.5 m²

All measurements are approximate and for display purposes only

Area Map



Features

- Semi Detached Family Home
- 2 Reception Rooms
- On Bus Routes
- Scope for Further Extension (stpp)
- 0.7 miles to Feltham Station
- 4 Bedrooms
- Off Road Parking
- Convenient for Good & Outstanding Schools
- Close to Local Shops

